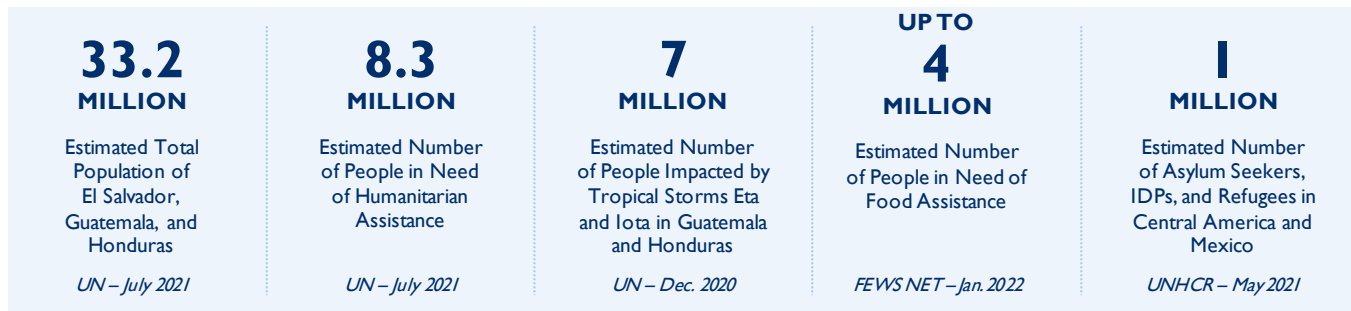


# El Salvador, Guatemala, and Honduras – Regional Response

February 2, 2022

## SITUATION AT A GLANCE



- Food insecurity persists across El Salvador, Guatemala, and Honduras, in January with households facing Crisis—IPC 3—levels of food insecurity.
- USAID/BHA continues to provide critical assistance in response to humanitarian needs due to recurrent droughts, COVID-19, and severe damage from Hurricanes Eta and Iota in the region, reaching more than 1.8 million people with food assistance, health, livelihoods, protection, shelter, and WASH support.
- State/PRM partner UNHCR provided critical protection assistance across Central America in November and December, including training on prevention and response to gender-based violence, and creating safe spaces for children.



<b>TOTAL U.S. GOVERNMENT HUMANITARIAN FUNDING</b> For the El Salvador, Guatemala, and Honduras Regional Response in FY 2021	USAID/BHA <sup>1</sup>	\$125,387,171
	State/PRM <sup>2</sup>	\$146,862,553
<b>Total<sup>3</sup></b>		<b>\$272,249,724</b>

*For complete funding breakdown with partners, see detailed chart on page 5*

<sup>1</sup> USAID's Bureau for Humanitarian Assistance (USAID/BHA)

<sup>2</sup> U.S. Department of State's Bureau of Population, Refugees, and Migration (State/PRM)

<sup>3</sup> Figures include U.S. Government (USG) funding for the El Salvador, Guatemala, and Honduras regional response announced by Vice President Kamala D. Harris on April 26, 2021, and additional State/PRM funding announced by Senior Advisor to the President on Migration Amy Pope on June 10, 2021.

## KEY DEVELOPMENTS

### **Food Insecurity Persists Across El Salvador, Guatemala, and Honduras Despite Seasonal Increases in Food Availability and Access and , Livelihoods Opportunities**

Between November and March, increased levels of food access and availability and a greater demand for agricultural labor is expected across El Salvador, Guatemala, and Honduras due to the harvest and planting seasons. Despite this, the high cost of food, fuel, and services are limiting economic recovery and driving food insecurity, with as many as four million people across the three countries estimated to require food assistance in January, according to the Famine Early Warning Systems Network (FEWS NET). Furthermore, the number of people facing Crisis—IPC 3—levels of food insecurity is expected to increase, as households deplete food stocks and savings during the March-to-August lean season with as many as 2.5 million people in Guatemala and Honduras, respectively, and as many as 500,000 people in El Salvador projected to face Crisis levels of food insecurity through July, according FEWS NET<sup>1</sup>.

The adverse effects of climate change-related agricultural trends, the coronavirus disease (COVID-19) pandemic, and severe damages from tropical storms Eta and Iota, which struck the region in November of 2020, have exacerbated food security across the region. Climate change is altering rainfall and weather patterns and negatively impacting agricultural household yields. Simultaneously, many households experienced decreased access to basic services, livelihood opportunities, and markets due to COVID-19-related movement restrictions.

To mitigate the worst effects of food insecurity and promote resilience throughout the region, USAID/BHA supports the UN World Food Program (WFP) to provide seeds, micro-irrigation, and climate-resilient agriculture methods as well as cash transfers for food. In Guatemala, since January 2021, WFP reached approximately 77,000 people with USAID/BHA-supported cash transfers for food to help meet basic food and nutrition needs. WFP also continued cash transfers for food in December in El Salvador and Honduras, reaching nearly 40,000 individuals. Additionally, in Honduras, USAID/BHA partners Catholic Relief Services (CRS) and Global Communities supported individuals through agricultural trainings, providing information on household vegetable gardens, nutrition, and post-harvest management. These trainings facilitate small-holder farmers to build on and enhance existing agricultural efforts with the goal of increased access to food and livelihoods. USAID/BHA continues to closely monitor food security conditions in the region in coordination with other donors and relief actors on the ground.

### **USAID/BHA Partner IRC Provides GBV Assistance for Women and Girls**

USAID/BHA partner the International Rescue Committee (IRC) continues to provide life-saving protection assistance to women and girls in El Salvador, Guatemala, and Honduras, including gender-based violence (GBV) case management services, education, and prevention. In December, IRC reached more than 5,600 people through GBV awareness-raising activities in the region, focusing on prevention strategies and response services. The international non-governmental organization also supported GBV case management services for nearly 200 women and girls across the three countries in December, referring nearly 50 women and girls to local service providers to help address their protection needs.

GBV remains a significant concern throughout El Salvador, Guatemala, and Honduras, due to widespread impacts of recurrent droughts , adverse effects of hurricanes Eta and Iota, and COVID-19. Additionally, the three countries all have high levels of displacement, with GBV considered a displacement factor for women and girls. Moreover, displacement situations often can lead to increased GBV risks for women and girls, according to the Office of the UN High Commissioner for Refugees (UNHCR). In late November and December, State/PRM partner the Office of the UN High Commissioner for Refugees (UNHCR) and BHA Protection partners in the

<sup>1</sup> The Integrated Food Security Phase Classification (IPC) is a multi-partner initiative that developed a standardized scale to classify the severity and magnitude of food insecurity. The IPC scale, which is comparable across countries and time, ranges from Minimal—IPC 1—to Famine—IPC 5—for acute food insecurity.

region supported “16 Days of Activism Against Gender-Based Violence”, an annual international campaign that advocates for more effective, immediate, and innovative measures to protect the rights of women and girls.

## State/PRM Partner UNHCR Advocates for, Supports Protection of Vulnerable Populations

UNHCR continued to provide critical protection assistance supporting displaced populations across Central America in November and December. The UN agency trained Government of Guatemala officials and Guatemala civil society actors on refugee protection and the prevention of GBV. UNHCR also coordinated with local partner organizations in Guatemala to discuss strategies for preventing and responding to GBV among displaced populations, while also supporting an estimated 9,500 asylum-seekers, refugees as well as Guatemalans at risk of displacement with multipurpose cash assistance (MPCA) throughout 2021. Separately, UNHCR distributed MPCA to more than 600 vulnerable individuals in El Salvador in November to help people meet their basic needs. Additionally, in Honduras, the UN agency created two new safe spaces for young children at risk of displacement in November. Moreover, in November in Panama, UNHCR led a GBV working group with Hebrew Immigrant Aid Society (HIAS) to host two family fairs in which more than 1,100 people participated, to promote GBV related programs and information.

### KEY FIGURES



**40,000**

People received USG emergency food assistance in December



**11,700**

People supported with USG-funded protection activities per month

## U.S. GOVERNMENT RESPONSE

### FOOD SECURITY

To address acute food insecurity in El Salvador, Guatemala, and Honduras exacerbated by the effects of the COVID-19 pandemic, recurrent droughts, and damage from multiple tropical storms, USAID/BHA supports the delivery of in-kind distributions and cash assistance for food to reduce food consumption gaps and prevent and address malnutrition among food-insecure households during the agricultural lean season. USAID/BHA is building upon years of strategic emergency food assistance to address increased needs within the three countries in a manner that improves food consumption patterns and increases dietary diversity, while building resilience to shocks for vulnerable communities that rely heavily on agricultural production.

### PROTECTION

With State/PRM support, UNHCR is working with governments across Central America and Mexico to implement the governments’ respective commitments under the Comprehensive Regional Protection and Solutions Framework—known in Spanish as MIRPS—to address forced displacement. State/PRM efforts include building government capacities to conduct protection screenings, receive and process asylum claims, and respond to protection concerns among internally displaced persons (IDPs) and other at-risk communities. In addition, State/PRM provides funding to the International Committee of the Red Cross (ICRC), the International Organization for Migration (IOM), UNHCR, and the UN Children’s Fund (UNICEF) in countries across the region to support shelter, livelihoods, and other assistance to refugees, asylum seekers, IDPs, and vulnerable migrants, including children; survivors of GBV; lesbian, gay, bisexual, transgender, queer, and intersex individuals; and people with disabilities. UNHCR also

leads the Protection Cluster—the coordinating bodies for humanitarian protection activities, comprising UN agencies, non-governmental organizations, and other stakeholders—in countries throughout the region, providing humanitarian leadership on coordinated responses to forced displacement within each country.

With State/PRM funding, UNHCR is working with the Government of El Salvador to train staff to identify and refer persons in need of protection services. State/PRM also supports UNICEF efforts throughout the region to strengthen child welfare services for vulnerable children.

USAID/BHA’s protection partners in El Salvador, Guatemala, and Honduras provide psychosocial support, learning and recreational opportunities, and case management and referral services for children and women at high risk of exploitation, GBV, and other forms of abuse. USAID/BHA partners are assisting populations in Honduras who have become increasingly vulnerable to GBV, and child protection concerns due to displacement and other impacts, such as those generated by the COVID-19 pandemic and tropical storms Eta and Iota.

## AGRICULTURE

USAID/BHA partners are supporting smallholder farmers and other agriculture-dependent households in El Salvador, Guatemala, and Honduras. With USAID/BHA support, humanitarian partners are providing critical agricultural assistance to farmers to ensure appropriate and timely inputs for planting and growing seasons to mitigate worsening food insecurity in the region. Partners are providing farming tools, fertilizer, livestock feed, poultry, seeds, and access to veterinary services to rural households.

USAID/BHA partners complement these agricultural inputs by providing training on climate-smart farming practices such as diversification of crops, drip irrigation, and soil management to increase crop production and build resilience to future climate shocks. In Guatemala and Honduras, households also receive training on how to increase chicken egg production as a source of protein and additional income. USAID/BHA-funded agricultural programming also strengthens livelihood opportunities and market access for rural households and helps to improve nutritional outcomes through increased availability of nutritious local foods.

## ECONOMIC RECOVERY AND MARKET SYSTEMS

USAID/BHA partners are implementing economic recovery and market systems (ERMS) interventions to restore livelihoods, increase financial resilience, and mitigate the impact of future shocks on vulnerable households. Program activities include establishing community savings and loans groups and restarting and expanding income-generating activities. In some communities, USAID/BHA partners are also holding financial literacy courses to promote savings and increase awareness of and access to financial services.



**7,500**

People received USG agricultural assistance in December



**173**

Communities in Honduras’ Dry Corridor supported with USG-funded ERMS activities



## \$3.2 Million

In dedicated USG support for shelter and settlement activities in FY 2021

### SHELTER AND SETTLEMENTS

USAID/BHA supports implementing partners to help storm-affected households repair and rehabilitate damaged structures. Activities include distributing shelter materials to vulnerable individuals to support repairs, as well as offering temporary relocations to safe shelters, as needed.

Moreover, USAID/BHA partners are providing technical assistance and materials to improve emergency shelters and build transitional shelters, while improving urban settlements to mitigate communities' vulnerability to floods, landslides, and seismic activity.

### CONTEXT IN BRIEF

- Consecutive years of drought, damage caused by tropical storms Eta and Iota, and the socioeconomic effects of COVID-19 have adversely affected thousands of subsistence farmers and exacerbated food insecurity in rural and urban communities in El Salvador, Guatemala, and Honduras. Meanwhile, since the onset of the COVID-19 pandemic, poor health infrastructure, high population density, and insufficient availability of water, sanitation, and hygiene (WASH) services have challenged efforts to control the spread of the disease, while the socioeconomic effects of the pandemic have exacerbated health, food, nutrition, and protection needs across the three countries.
- USAID/BHA was required to freeze its humanitarian assistance programming in El Salvador, Guatemala, and Honduras between March 2019 and May 2020, during which food insecurity increased significantly across the three countries. In June 2020, USAID/BHA began to re-engage with its partners in the region and resumed support for food assistance programming to vulnerable populations in El Salvador, Guatemala, and Honduras.
- Tropical Storm Amanda, which passed over El Salvador in May 2020, and tropical storms Eta and Iota, which passed over Guatemala and Honduras in November 2020, resulted in widespread destruction, exacerbating humanitarian needs and vulnerabilities in the region.
- On February 26, 2021, U.S. Ambassador William W. Popp issued a disaster declaration for Guatemala; on March 8, U.S. Chargé d’Affaires Colleen A. Hoey issued a disaster declaration for Honduras; and on March 15, U.S. Chargé d’Affaires Brendan O’Brien issued a disaster declaration for El Salvador. The USG issued all three disaster declarations for FY 2021 in response to severe food insecurity resulting from the adverse socioeconomic effects of the COVID-19 pandemic, natural disasters, recurrent drought, and violence-induced displacement. All three disaster declarations were re-issued for FY 2022 in response to the severe humanitarian needs that persist throughout the three countries.

### USG HUMANITARIAN FUNDING FOR THE EL SALVADOR, GUATEMALA, AND HONDURAS REGIONAL RESPONSE IN FY 2021<sup>1</sup>

IMPLEMENTING PARTNER	ACTIVITY	LOCATION	AMOUNT
<b>EL SALVADOR</b>			

USAID/BHA			
Americares	Health, Protection, WASH	San Miguel, Usulután	\$1,000,000
CRS	Agriculture, MPCA	Ahuachapán, La Unión, Morazán, Sonsonate	\$2,409,500
IRC	MPCA, Protection	San Miguel, San Salvador, Santa Ana, Usulután	\$592,031
Norwegian Refugee Council (NRC)	ERMS, MPCA, Protection	La Libertad, La Paz, San Salvador, Santa Ana, Sonsonate, Usulután	\$2,307,607
Pan American Health Organization (PAHO)	Health	Ahuachapán, La Paz, La Unión, Morazán, San Miguel, Usulután	\$800,000
WFP	Agriculture, Disaster Risk Reduction Policy and Practice (DRRPP), Food Assistance—Cash Transfers	Ahuachapán, La Unión, Morazán, San Miguel, Usulután	\$7,000,000
World Vision	Agriculture, ERMS, MPCA, WASH	Ahuachapán, Morazán, San Miguel, San Salvador, Santa Ana, Sonsonate, Usulután	\$2,000,000
<b>TOTAL USAID/BHA FUNDING IN EL SALVADOR</b>			<b>\$16,109,138</b>
STATE/PRM			
UNHCR	Education, ERMS, Protection, Shelter and Settlements	Countrywide	\$7,700,000
UNICEF	Education, Protection, WASH	Countrywide	\$3,570,000
<b>TOTAL STATE/PRM FUNDING IN EL SALVADOR</b>			<b>\$11,270,000</b>
GUATEMALA			
USAID/BHA			
Acción contra el Hambre/Spain (ACH/Spain)	Food Assistance—Cash Transfers	Huehuetenango	\$3,000,000
CARE	ERMS, Protection	Alta Verapaz, Izabal, Quetzaltenango, Quiché, San Marcos	\$4,498,659
CRS	Agriculture, ERMS, MPCA, Nutrition, WASH	Alta Verapaz, Chiquimula	\$13,500,000
Global Communities	Agriculture, ERMS, Health, MPCA, WASH	Huehuetenango	\$11,400,000
International Federation of Red Cross and Red Crescent Societies (IFRC)	ERMS, MPCA, Nutrition	Izabal	\$1,075,650
IRC	MPCA, Protection	Chimaltenango, Huehuetenango	\$499,989
Plan USA	Agriculture, ERMS, Food Assistance—Cash Transfers, WASH	Alta Verapaz	\$2,500,000
Save the Children Federation (SCF)	Health, MPCA, Nutrition, Protection, WASH	Quiché	\$6,578,865
WFP	Food Assistance—Cash Transfers	El Progreso, Jalapa, Jutiapa, Retalhuleu, Santa Rosa, Sololá, Zacapa	\$5,500,000
World Vision	Agriculture, Food Assistance—Cash Transfers, Protection, WASH	Alta Verapaz, Totonicapán	\$3,000,000
<b>TOTAL USAID/BHA FUNDING IN GUATEMALA</b>			<b>\$51,553,163</b>
STATE/PRM			
IOM	Multi-Sector Assistance	Countrywide	\$2,448,455

SCF	Protection	Countrywide	\$1,600,000
UNHCR	Education, ERMS, Protection, Shelter and Settlements	Countrywide	\$14,300,000
UNICEF	Education, Protection, WASH, Shelter and Settlements	Countrywide	\$4,395,000

<b>TOTAL STATE/PRM FUNDING IN GUATEMALA</b>			<b>\$22,743,455</b>
---	--	--	---------------------

<b>HONDURAS</b>			
-----------------	--	--	--

USAID/BHA			
-----------	--	--	--

Adventist Development and Relief Agency	Agriculture, Food Assistance—Local, Regional, and International Procurement	Choluteca, El Paraíso, Francisco Morazán	\$9,000,000
CARE	MPCA, Protection	Cortés, Santa Bárbara, Yoro	\$1,736,000
CRS	Agriculture, ERMS, MPCA, Shelter and Settlements, WASH	Cortés, Francisco Morazán, La Paz, Lempira, Santa Bárbara, Yoro	\$7,085,670
Global Communities	Agriculture; ERMS; Humanitarian Coordination, Information Management, and Assessments (HCIMA); MPCA; Shelter and Settlements; WASH	Choluteca, Copán, Cortés, El Paraíso, Ocotepeque, Santa Bárbara, Valle	\$4,500,000
GOAL	Agriculture, ERMS, MPCA, Shelter and Settlements, WASH	Atlántida, Colón, Cortés, Francisco Morazán, Gracias a Dios, Intibucá, Lempira, Olancho, Yoro	\$6,585,670
IRC	MPCA, Protection	Cortés, Francisco Morazán, Santa Bárbara	\$399,980
NRC	Agriculture, ERMS, MPCA, Protection	Copán, Francisco Morazán, Santa Bárbara	\$2,000,000
PAHO	Health	Choluteca, Gracias a Dios, Santa Bárbara	\$1,500,000
UNICEF	Health, Nutrition, Protection	Atlántida, Cortés, Yoro	\$2,000,000
WFP	Agriculture, DRRPP, ERMS, Food Assistance—Cash Transfers	Atlántida, Colón, Cortés, Olancho, Santa Bárbara, Yoro	\$15,500,000
World Vision	Agriculture, ERMS, MPCA, Protection, WASH	Copán, Cortés, Santa Bárbara, Yoro	\$2,500,000

<b>TOTAL USAID/BHA FUNDING IN HONDURAS</b>			<b>\$52,807,320</b>
--	--	--	---------------------

STATE/PRM			
-----------	--	--	--

UNHCR	Education, ERMS, Protection, Shelter and Settlements	Countrywide	\$9,700,000
UNICEF	Education, Nutrition, Protection, WASH	Countrywide	\$3,636,000

<b>TOTAL STATE/PRM FUNDING IN HONDURAS</b>			<b>\$13,336,000</b>
--	--	--	---------------------

<b>BELIZE</b>			
---------------	--	--	--

STATE/PRM			
-----------	--	--	--

UNICEF	Education, Protection	Countrywide	\$687,000
--------	-----------------------	-------------	-----------

<b>TOTAL STATE/PRM FUNDING IN BELIZE</b>			<b>\$687,000</b>
--	--	--	------------------

<b>COSTA RICA</b>			
-------------------	--	--	--

STATE/PRM			
-----------	--	--	--

HIAS	ERMS	Countrywide	\$1,500,000
IOM	Multi-Sector Assistance	Countrywide	\$90,000

Pan American Development Foundation (PADF)	Protection	Countrywide	\$2,217,000
UNHCR	ERMS, MPCA, Protection	Countrywide	\$8,900,000
UNICEF	Education, Protection, WASH	Countrywide	\$1,120,000
<b>TOTAL STATE/PRM FUNDING IN COSTA RICA</b>			<b>\$13,827,000</b>
<b>MEXICO</b>			
STATE/PRM			
American Red Cross (AmCross)	Protection	Countrywide	\$1,655,854
Asylum Access	Protection	Countrywide	\$1,491,282
Child Fund International	Protection	Countrywide	\$1,194,462
HIAS	Protection	Countrywide	\$1,491,500
IOM	MPCA, Protection, Shelter and Settlements	Countrywide	\$5,180,000
UNHCR	Education, MPCA, Protection, Shelter and Settlements	Countrywide	\$38,400,000
UNICEF	Education, ERMS, Protection, WASH, Shelter and Settlements	Countrywide	\$10,250,000
<b>TOTAL STATE/PRM FUNDING IN MEXICO</b>			<b>\$59,663,098</b>
<b>PANAMA</b>			
STATE/PRM			
IOM	Multi-Sector Assistance	Countrywide	\$390,000
PADF	Protection	Countrywide	\$1,000,000
UNICEF	Education, Health, Protection, WASH	Countrywide	\$1,446,000
<b>TOTAL STATE/PRM FUNDING IN PANAMA</b>			<b>\$2,836,000</b>
<b>REGIONAL</b>			
STATE/PRM			
ICRC	Education, Health, Protection	Regional	\$10,200,000
IOM	Protection, Shelter and Settlements	Regional	\$1,660,000
UNHCR	ERMS, Protection, Shelter and Settlements	Regional	\$10,100,000
UNICEF	HCIMA, DRRPP	Regional	\$540,000
<b>TOTAL STATE/PRM FUNDING IN REGION</b>			<b>\$22,500,000</b>
<b>TOTAL USAID/BHA EMERGENCY FUNDING FOR EL SALVADOR, GUATEMALA, AND HONDURAS REGIONAL RESPONSE IN FY 2021</b>			<b>\$120,469,621</b>
<b>TOTAL STATE/PRM EMERGENCY FUNDING FOR EL SALVADOR, GUATEMALA, AND HONDURAS REGIONAL RESPONSE IN FY 2021</b>			<b>\$146,862,553</b>
<b>TOTAL USG EMERGENCY FUNDING FOR EL SALVADOR, GUATEMALA, AND HONDURAS REGIONAL RESPONSE IN FY 2021</b>			<b>\$267,332,174</b>

<sup>1</sup> State/PRM funding figures reflect a portion—totaling \$69,344,000—of the more than \$104 million announced by Vice President Harris on April 26, 2021; figures do not include announced \$25 million from prior fiscal years reallocated to address new priorities and approximately \$10.5 million in funding under the U.S. Refugee Admissions Program in the Western Hemisphere that is not included as part of State/PRM's overseas assistance totals. Additionally, State/PRM funding includes \$57,100,000 announced by Senior Advisor to the President on Migration Amy Pope on June 10, 2021. Included in the overall total is \$10.8 million in funding from the American Rescue Plan Act in response to COVID-19.

#### ER4 FUNDING FOR EL SALVADOR, GUATEMALA, AND HONDURAS REGIONAL RESPONSE IN FY 2021 <sup>2</sup>

IMPLEMENTING PARTNER	ACTIVITY	LOCATION	AMOUNT
----------------------	----------	----------	--------



USAID/BHA			
El Salvador			
CRS	DRRPP	La Unión, San Miguel, San Vicente, Usulután	\$380,000
Miyamoto International	DRRPP	San Salvador	\$150,000
<b>TOTAL USAID/BHA FUNDING FOR EL SALVADOR</b>			<b>\$530,000</b>
Guatemala			
CRS	Agriculture, ERMS, Natural Hazards and Technological Risks (NHTR)	Baja Verapaz, Chiquimula	\$905,802
	DRRPP, Shelter and Settlements	Guatemala Department	\$1,000,000
Global Communities	DRRPP	Guatemala Department, Huehuetenango, Jalapa, Jutiapa, Quetzaltenango, Quiché, San Marcos, Santa Rosa, Sololá, Totonicapán	\$371,748
<b>TOTAL USAID/BHA FUNDING FOR GUATEMALA</b>			<b>\$2,277,550</b>
Honduras			
CRS	Agriculture, ERMS, NHTR	Intibucá, La Paz, Lempira	\$1,000,000
	DRRPP, Shelter and Settlements	Francisco Morazan	\$650,000
GOAL	DRRPP, ERMS, NHTR, Shelter and Settlements	Cortes, Yoro	\$460,000
<b>TOTAL USAID/BHA FUNDING FOR HONDURAS</b>			<b>\$2,110,000</b>
<b>TOTAL USAID/BHA ER4 FUNDING FOR EL SALVADOR, GUATEMALA, AND HONDURAS REGIONAL RESPONSE IN FY 2021</b>			<b>\$4,917,550</b>
<b>TOTAL USAID/BHA HUMANITARIAN ASSISTANCE FUNDING FOR EL SALVADOR, GUATEMALA, AND HONDURAS REGIONAL RESPONSE IN FY 2021</b>			<b>\$125,387,171</b>
<b>TOTAL STATE/PRM HUMANITARIAN ASSISTANCE FUNDING FOR EL SALVADOR, GUATEMALA, AND HONDURAS REGIONAL RESPONSE IN FY 2021</b>			<b>\$146,862,553</b>
<b>TOTAL USG HUMANITARIAN ASSISTANCE FUNDING FOR EL SALVADOR, GUATEMALA, AND HONDURAS REGIONAL RESPONSE IN FY 2021<sup>3</sup></b>			<b>\$272,249,724</b>

<sup>2</sup> Activities include support of early recovery, risk reduction, and resilience (ER4) programs to address chronic vulnerabilities, reduce the overall impact of recurrent shocks and stresses, and build resilience to future shocks.

<sup>3</sup> Reflects portion of funding announced, committed, or obligated as of September 30, 2021.

## PUBLIC DONATION INFORMATION

- The most effective way people can assist relief efforts is by making cash contributions to humanitarian organizations that are conducting relief operations. A list of humanitarian organizations that are accepting cash donations for disaster responses around the world can be found at.
- USAID encourages cash donations because they allow aid professionals to procure the exact items needed (often in the affected region); reduce the burden on scarce resources (such as transportation routes, staff time, and warehouse space); can be transferred very quickly and without transportation costs; support the economy of the disaster-stricken region; and ensure culturally, dietarily, and environmentally appropriate assistance.
- More information can be found at:
  - USAID Center for International Disaster Information: [cidi.org](http://cidi.org)
  - Information on relief activities of the humanitarian community can be found at [reliefweb.int](http://reliefweb.int).

USAID/BHA bulletins appear on the USAID website at [usaid.gov/humanitarian-assistance/where-we-work](https://www.usaid.gov/humanitarian-assistance/where-we-work)