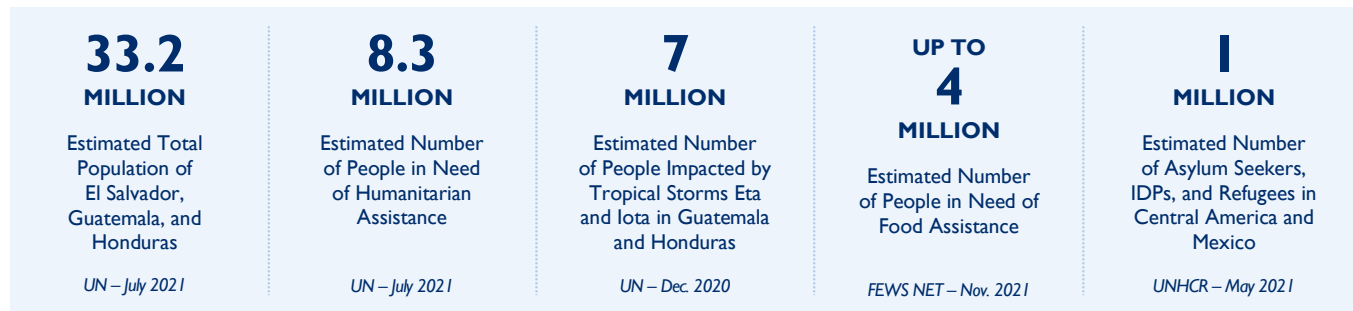


El Salvador, Guatemala, and Honduras – Regional Response

December 1, 2021

SITUATION AT A GLANCE



- FEWS NET projects some households across the Dry Corridor, areas affected by Eta and Iota, and parts of northeastern Honduras and the Guatemalan highlands will likely continue to face Crisis levels of acute food insecurity through May 2022.
- USG and co-hosts convene a high-level solidarity donor roundtable in support of HRP for El Salvador, Guatemala, and Honduras in November.
- State/PRM partner UNHCR provides critical MPCA and protection assistance across Central America in August and September.



TOTAL U.S. GOVERNMENT HUMANITARIAN FUNDING For the El Salvador, Guatemala, and Honduras Regional Response in FY 2021	USAID/BHA ¹	\$125,387,171
	State/PRM ²	\$146,862,553
	Total³	\$272,249,724

For complete funding breakdown with partners, see detailed chart on page 5

¹ USAID's Bureau for Humanitarian Assistance (USAID/BHA)

² U.S. Department of State's Bureau of Population, Refugees, and Migration (State/PRM)

³ Figures include U.S. Government (USG) funding for the El Salvador, Guatemala, and Honduras regional response announced by Vice President Kamala D. Harris on April 26, 2021 and additional State/PRM funding announced by Senior Advisor to the President on Migration Amy Pope on June 10, 2021.

KEY DEVELOPMENTS

High Commodity Prices, Limited Livelihood Opportunities, Disaster-Related Damage Drive Continued Food Insecurity in El Salvador, Guatemala, Honduras

Despite seasonal improvements expected in the coming months, Minimal—IPC 1—to Crisis—IPC 3—levels of acute food insecurity are projected to persist through May 2022 in El Salvador, Guatemala, and Honduras, according to the Famine Early Warning Systems Network (FEWS NET).¹ Continued recovery from the second-order effects of the coronavirus disease (COVID-19) pandemic and bolstered access to income via agricultural labor opportunities amid the *postrera* harvest and *apante* planting seasons are projected to augment food security for some households through January 2022. However, high and increasing prices for food, fuel, and transportation and limited access to livelihood opportunities broadly are projected to continue to result in poor food security conditions across the three countries. Similarly, asset losses related to COVID-19 and the effects of tropical storms Eta and Iota will also continue to negatively impact household food security. Through January 2022, FEWS NET projects that some households in the region's Dry Corridor and storm-affected areas, northeastern Honduras, and parts of the Guatemalan highlands will likely continue facing Crisis levels of acute food insecurity. Furthermore, regional food security conditions are likely to worsen from February to May 2022, seasonally deteriorating as households deplete food stocks and face increasing challenges purchasing adequate food due to the rising prices of staple commodities.

USAID/BHA continues to support the UN World Food Program (WFP) to provide agriculture support and cash transfers for food to bolster food security conditions across the region. In Honduras, WFP provided USAID/BHA-supported cash transfers for food to nearly 41,000 individuals in Cortés, Santa Bárbara, and Yoro departments in October to help households meet basic food and nutrition needs. Meanwhile, WFP reached nearly 46,000 people in El Salvador, as well as nearly 2,100 households in Guatemala, with USAID/BHA-supported cash transfers during October. USAID/BHA continues to closely monitor food security conditions in the region in coordination with other donors and relief actors.

USG and Co-Hosts Convene High-Level Solidarity Donor Roundtable in Support of HRP in El Salvador, Guatemala, and Honduras in November

The USG—with co-hosts the European Commission's Department for European Civil Protection and Humanitarian Aid Operations (ECHO), the Government of Canada, and in partnership with the UN—convened a high-level donor solidarity roundtable with 20 other donor countries to discuss humanitarian assistance to El Salvador, Guatemala, and Honduras on November 15. During the meeting, participants discussed current humanitarian needs, response gaps and challenges, and required financial support toward the UN Humanitarian Response Plans (HRPs) for the three countries. The USG and many participating donor countries reiterated their commitments to addressing unmet needs in the region, wherein an estimated 8.3 million people required humanitarian assistance as of August, according to the UN. While the HRPs remain significantly underfunded, the USG is the largest donor for humanitarian operations across the three countries, providing \$168.7 million total toward the three HRPs.

State/PRM Partner UNHCR Provides Critical Assistance in El Salvador, Guatemala, and the Region in August and September

State/PRM partner the Office of the UN High Commissioner for Refugees (UNHCR) continued to provide critical humanitarian assistance supporting asylum seekers, migrants, and refugees across Central America in August and September. The UN agency distributed multipurpose cash assistance (MPCA) to nearly 1,400

¹ The Integrated Food Security Phase Classification (IPC) is a multi-partner initiative that developed a standardized scale to classify the severity and magnitude of food insecurity. The IPC scale, which is comparable across countries and time, ranges from Minimal—IPC 1—to Famine—IPC 5—for acute food insecurity.

vulnerable individuals in El Salvador in August to help people meet their basic needs and provided nearly 260 electronic tablets to refugee children or children seeking asylum in Guatemala to bolster remote access to education in September. In addition, UNHCR trained more than 220 security officials in Belize on the rights of refugees and migrants and 35 officials from the Government of Panama National Migration Service on statelessness and international protection standards during August.

KEY FIGURES



115,500

People received USG emergency food assistance in October



11,700

People supported with USG-funded protection activities per month

U.S. GOVERNMENT RESPONSE

FOOD SECURITY

To address acute food insecurity in El Salvador, Guatemala, and Honduras exacerbated by the impacts of the COVID-19 pandemic, recurrent droughts, and damage from multiple tropical storms, USAID/BHA supports the delivery of cash assistance for food to reduce food consumption gaps and prevent and address malnutrition among food-insecure households during the lean season. USAID/BHA is building upon years of strategic emergency food assistance to address increased needs within the three countries in a manner that improves food consumption patterns and increases dietary diversity, while building resilience to shocks for vulnerable communities that rely heavily on agricultural production.

PROTECTION

With State/PRM support, UNHCR is working with governments across Central America and Mexico to implement the governments' respective commitments under the Comprehensive Regional Protection and Solutions Framework—known in Spanish as MIRPS—to address forced displacement. State/PRM efforts include building government capacities to conduct protection screenings, receive and process asylum claims, and respond to protection concerns among internally displaced persons (IDPs) and other at-risk communities. In addition, State/PRM provides funding to the International Committee of the Red Cross (ICRC), the International Organization for Migration (IOM), UNHCR, and the UN Children's Fund (UNICEF) in countries across the region to support shelter, livelihoods, and other assistance to refugees, asylum seekers, IDPs, and vulnerable migrants, including children; survivors of gender-based violence (GBV); lesbian, gay, bisexual, transgender, queer, and intersex individuals; and people with disabilities. UNHCR also leads the Protection Clusters—the coordinating bodies for humanitarian protection activities, comprising UN agencies, non-governmental organizations, and other stakeholders—in countries throughout the region, providing humanitarian leadership on coordinated responses to forced displacement within each country.

With State/PRM funding, UNHCR is working with the Government of El Salvador to train staff to identify and refer persons in need of protection services. State/PRM also supports UNICEF efforts throughout the region to strengthen child welfare services for vulnerable children.

USAID/BHA's protection partners in El Salvador, Guatemala, and Honduras

provide psychosocial support, learning and recreational opportunities, and case management and referral services for children and women at high risk of exploitation, GBV, and other forms of abuse. USAID/BHA partners are assisting populations in Honduras who have become increasingly vulnerable to GBV and child protection concerns due to displacement and other impacts, such as those generated by the COVID-19 pandemic and tropical storms Eta and Iota. Moreover, USAID/BHA partners are scaling up programming to address additional protection needs in El Salvador, Guatemala, and Honduras.



24,000

People received USG agricultural assistance in October

AGRICULTURE

USAID/BHA partners are supporting smallholder farmers and other agriculture-dependent households in El Salvador, Guatemala, and Honduras. With USAID/BHA support, humanitarian partners are providing critical agricultural assistance to farmers to ensure appropriate and timely inputs for planting and growing seasons to mitigate worsening food insecurity in the region. Partners are providing farming tools, fertilizer, livestock feed, poultry, seeds, and access to veterinary services to rural households.

USAID/BHA partners complement these agricultural inputs by providing training on climate-smart farming practices such as drip irrigation, diversification of crops, and soil management to increase crop production and build resilience to future climate shocks. In Honduras and Guatemala, households also receive training on how to increase chicken egg production as a source of protein and additional income. USAID/BHA-funded agricultural programming also strengthens livelihood opportunities and market access for rural households and helps to improve nutritional outcomes through increased availability of nutritious local foods.



173

Communities in Honduras' Dry Corridor supported with USG-funded ERMS activities

ECONOMIC RECOVERY AND MARKET SYSTEMS

USAID/BHA partners are implementing economic recovery and market systems (ERMS) interventions to restore livelihoods, increase financial resilience, and mitigate the impact of future shocks on vulnerable households. Program activities include establishing community savings and loans groups and restarting and expanding income-generating activities. In some communities, USAID/BHA partners are also holding financial literacy courses to promote savings and increase awareness of and access to financial services.



\$3.2 Million

In dedicated USG support for shelter and settlement activities in FY 2021

SHELTER AND SETTLEMENTS

USAID/BHA supports implementing partners to help storm-affected households repair and rehabilitate damaged structures. Activities include distributing shelter materials to vulnerable individuals to support repairs, as well as offering temporary relocations to safe shelters, as needed. Moreover, USAID/BHA partners are providing technical assistance and materials to improve emergency shelters and build transitional shelters, while improving urban settlements to mitigate communities' vulnerability to floods, landslides, and seismic activity.

CONTEXT IN BRIEF

- Consecutive years of drought, damage caused by tropical storms Eta and Iota, and the impact of COVID-19 have adversely affected thousands of subsistence farmers and exacerbated food insecurity in rural and urban communities in El Salvador, Guatemala, and Honduras. Meanwhile, since the onset of the COVID-19 pandemic, poor health infrastructure, high population density, and insufficient availability of water and sanitation services have challenged efforts to control the spread of the disease, while the socioeconomic effects of the pandemic have exacerbated health, food, nutrition, and protection needs across the three countries.
- USAID/BHA was required to freeze its humanitarian assistance programming in El Salvador, Guatemala, and Honduras between March 2019 and May 2020, during which food insecurity increased significantly across the three countries. In June 2020, USAID/BHA began to re-engage with its partners in the region and resumed support for food assistance programming to vulnerable populations in El Salvador, Guatemala, and Honduras.
- Tropical Storm Amanda in El Salvador in May 2020 and tropical storms Eta and Iota in Guatemala and Honduras in November 2020 resulted in widespread destruction and humanitarian needs, further exacerbating vulnerabilities within the region.
- On February 26, 2021, U.S. Ambassador William W. Popp issued a disaster declaration for Guatemala; on March 8, U.S. Chargé d’Affaires Colleen A. Hoey issued a disaster declaration for Honduras; and on March 15, U.S. Chargé d’Affaires Brendan O’Brien issued a disaster declaration in El Salvador. All three disaster declarations were issued for FY 2021 in response to severe food insecurity resulting from increased displacement due to violence, the compounding effects of natural disasters, the COVID-19 pandemic, and recurrent drought.

USG HUMANITARIAN FUNDING FOR THE EL SALVADOR, GUATEMALA, AND HONDURAS REGIONAL RESPONSE IN FY 2021¹

IMPLEMENTING PARTNER	ACTIVITY	LOCATION	AMOUNT
EL SALVADOR			
USAID/BHA			
Americares	Health, Protection, Water, Sanitation, and Hygiene (WASH)	San Miguel, Usulután	\$1,000,000
Catholic Relief Services (CRS)	Agriculture, MPCA	Ahuachapán, La Unión, Morazán, Sonsonate	\$2,409,500
International Rescue Committee (IRC)	MPCA, Protection	San Miguel, San Salvador, Santa Ana, Usulután	\$592,031
Norwegian Refugee Council (NRC)	ERMS, MPCA, Protection	La Libertad, La Paz, San Salvador, Santa Ana, Sonsonate, Usulután	\$2,307,607
Pan American Health Organization (PAHO)	Health	Ahuachapán, La Paz, La Unión, Morazán, San Miguel, Usulután	\$800,000
WFP	Agriculture, Disaster Risk Reduction Policy and Practice (DRRPP), Food Assistance—Cash Transfers	Ahuachapán, La Unión, Morazán, San Miguel, Usulután	\$7,000,000

World Vision	Agriculture, ERMS, MPCA, WASH	Ahuachapán, Morazán, San Miguel, San Salvador, Santa Ana, Sonsonate, Usulután	\$2,000,000
TOTAL USAID/BHA FUNDING IN EL SALVADOR			\$16,109,138
STATE/PRM			
UNHCR	Education, ERMS, Protection, Shelter and Settlements	Countrywide	\$7,700,000
UNICEF	Education, Protection, WASH	Countrywide	\$3,570,000
TOTAL STATE/PRM FUNDING IN EL SALVADOR			\$11,270,000
GUATEMALA			
USAID/BHA			
Acción contra el Hambre/Spain (ACH/Spain)	Food Assistance–Cash Transfers	Huehuetenango	\$3,000,000
CARE	ERMS, Protection	Alta Verapaz, Izabal, Quetzaltenango, Quiché, San Marcos	\$4,498,659
CRS	Agriculture, ERMS, MPCA, Nutrition, WASH	Alta Verapaz, Chiquimula	\$13,500,000
Global Communities	Agriculture, ERMS, Health, MPCA, WASH	Huehuetenango	\$11,400,000
International Federation of Red Cross and Red Crescent Societies (IFRC)	ERMS, MPCA, Nutrition	Izabal	\$1,075,650
IRC	MPCA, Protection	Chimaltenango, Huehuetenango	\$499,989
Plan USA	Agriculture, ERMS, Food Assistance–Cash Transfers, WASH	Alta Verapaz	\$2,500,000
Save the Children Federation (SCF)	Health, MPCA, Nutrition, Protection, WASH	Quiché	\$6,578,865
WFP	Food Assistance–Cash Transfers	El Progreso, Jalapa, Jutiapa, Retalhuleu, Santa Rosa, Sololá, Zacapa	\$5,500,000
World Vision	Agriculture, Food Assistance–Cash Transfers, Protection, WASH	Alta Verapaz, Totonicapán	\$3,000,000
TOTAL USAID/BHA FUNDING IN GUATEMALA			\$51,553,163
STATE/PRM			
IOM	Multi-Sector Assistance	Countrywide	\$2,448,455
SCF	Protection	Countrywide	\$1,600,000
UNHCR	Education, ERMS, Protection, Shelter and Settlements	Countrywide	\$14,300,000
UNICEF	Education, Protection, WASH, Shelter and Settlements	Countrywide	\$4,395,000
TOTAL STATE/PRM FUNDING IN GUATEMALA			\$22,743,455
HONDURAS			
USAID/BHA			
Adventist Development and Relief Agency (ADRA)	Agriculture, Food Assistance–Local, Regional, and International Procurement	Choluteca, El Paraíso, Francisco Morazán	\$9,000,000
CARE	MPCA, Protection	Cortés, Santa Bárbara, Yoro	\$1,736,000
CRS	Agriculture, ERMS, MPCA, Shelter and Settlements, WASH	Cortés, Francisco Morazán, La Paz, Lempira, Santa Bárbara, Yoro	\$7,085,670

Global Communities	Agriculture; ERMS; Humanitarian Coordination, Information Management, and Assessments (HCIMA); MPCA; Shelter and Settlements; WASH	Choluteca, Copán, Cortés, El Paraíso, Ocotepeque, Santa Bárbara, Valle	\$4,500,000
GOAL	Agriculture, ERMS, MPCA, Shelter and Settlements, WASH	Atlántida, Colón, Cortés, Francisco Morazán, Gracias a Dios, Intibucá, Lempira, Olancho, Yoro	\$6,585,670
IRC	MPCA, Protection	Cortés, Francisco Morazán, Santa Bárbara	\$399,980
NRC	Agriculture, ERMS, MPCA, Protection	Copán, Francisco Morazán, Santa Bárbara	\$2,000,000
PAHO	Health	Choluteca, Gracias a Dios, Santa Bárbara	\$1,500,000
UNICEF	Health, Nutrition, Protection	Atlántida, Cortés, Yoro	\$2,000,000
WFP	Agriculture, DRRPP, ERMS, Food Assistance–Cash Transfers	Atlántida, Colón, Cortés, Olancho, Santa Bárbara, Yoro	\$15,500,000
World Vision	Agriculture, ERMS, MPCA, Protection, WASH	Copán, Cortés, Santa Bárbara, Yoro	\$2,500,000
TOTAL USAID/BHA FUNDING IN HONDURAS			\$52,807,320
STATE/PRM			
UNHCR	Education, ERMS, Protection, Shelter and Settlements	Countrywide	\$9,700,000
UNICEF	Education, Nutrition, Protection, WASH	Countrywide	\$3,636,000
TOTAL STATE/PRM FUNDING IN HONDURAS			\$13,336,000
BELIZE			
STATE/PRM			
UNICEF	Education, Protection	Countrywide	\$687,000
TOTAL STATE/PRM FUNDING IN BELIZE			\$687,000
COSTA RICA			
STATE/PRM			
HIAS	ERMS	Countrywide	\$1,500,000
IOM	Multi-Sector Assistance	Countrywide	\$90,000
Pan American Development Foundation (PADF)	Protection	Countrywide	\$2,217,000
UNHCR	ERMS, MPCA, Protection	Countrywide	\$8,900,000
UNICEF	Education, Protection, WASH	Countrywide	\$1,120,000
TOTAL STATE/PRM FUNDING IN COSTA RICA			\$13,827,000
MEXICO			
STATE/PRM			
American Red Cross (AmCross)	Protection	Countrywide	\$1,655,854
Asylum Access	Protection	Countrywide	\$1,491,282
Child Fund International	Protection	Countrywide	\$1,194,462
HIAS	Protection	Countrywide	\$1,491,500

IOM	MPCA, Protection, Shelter and Settlements	Countrywide	\$5,180,000
UNHCR	Education, MPCA, Protection, Shelter and Settlements	Countrywide	\$38,400,000
UNICEF	Education, ERMS, Protection, WASH, Shelter and Settlements	Countrywide	\$10,250,000
TOTAL STATE/PRM FUNDING IN MEXICO			\$59,663,098
PANAMA			
STATE/PRM			
IOM	Multi-Sector Assistance	Countrywide	\$390,000
PADF	Protection	Countrywide	\$1,000,000
UNICEF	Education, Health, Protection, WASH	Countrywide	\$1,446,000
TOTAL STATE/PRM FUNDING IN PANAMA			\$2,836,000
REGIONAL			
STATE/PRM			
ICRC	Education, Health, Protection	Regional	\$10,200,000
IOM	Protection, Shelter and Settlements	Regional	\$1,660,000
UNHCR	ERMS, Protection, Shelter and Settlements	Regional	\$10,100,000
UNICEF	HCIMA, DRRPP	Regional	\$540,000
TOTAL STATE/PRM FUNDING IN REGION			\$22,500,000
TOTAL USAID/BHA EMERGENCY FUNDING FOR EL SALVADOR, GUATEMALA, AND HONDURAS REGIONAL RESPONSE IN FY 2021			\$120,469,621
TOTAL STATE/PRM EMERGENCY FUNDING FOR EL SALVADOR, GUATEMALA, AND HONDURAS REGIONAL RESPONSE IN FY 2021			\$146,862,553
TOTAL USG EMERGENCY FUNDING FOR EL SALVADOR, GUATEMALA, AND HONDURAS REGIONAL RESPONSE IN FY 2021			\$267,332,174

¹ State/PRM funding figures reflect a portion—totaling \$69,344,000—of the more than \$104 million announced by Vice President Harris on April 26, 2021; figures do not include announced \$25 million from prior fiscal years reallocated to address new priorities and approximately \$10.5 million in funding under the U.S. Refugee Admissions Program in the Western Hemisphere that is not included as part of State/PRM's overseas assistance totals. Additionally, State/PRM funding includes \$57,100,000 announced by Senior Advisor to the President on Migration Amy Pope on June 10, 2021. Included in the overall total is \$10.8 million in funding from the American Rescue Plan Act in response to COVID-19.

ER4 FUNDING FOR EL SALVADOR, GUATEMALA, AND HONDURAS REGIONAL RESPONSE IN FY 2021²

IMPLEMENTING PARTNER	ACTIVITY	LOCATION	AMOUNT
USAID/BHA			
El Salvador			
CRS	DRRPP	La Unión, San Miguel, San Vicente, Usulután	\$380,000
Miyamoto International	DRRPP	San Salvador	\$150,000
TOTAL USAID/BHA FUNDING FOR EL SALVADOR			\$530,000
Guatemala			
CRS	Agriculture, ERMS, Natural Hazards and Technological Risks (NHTR)	Baja Verapaz, Chiquimula	\$905,802
	DRRPP, Shelter and Settlements	Guatemala Department	\$1,000,000
Global Communities	DRRRPP	Guatemala Department, Huehuetenango, Jalapa, Jutiapa, Quetzaltenango, Quiché, San Marcos, Santa Rosa, Sololá, Totonicapán	\$371,748

TOTAL USAID/BHA FUNDING FOR GUATEMALA			\$2,277,550
Honduras			
CRS	Agriculture, ERMS, NHTR	Intibucá, La Paz, Lempira	\$1,000,000
	DRRPP, Shelter and Settlements	Francisco Morazan	\$650,000
GOAL	DRRPP, ERMS, Natural Hazards and Technological Risks, Shelter and Settlements	Cortes, Yoro	\$460,000
TOTAL USAID/BHA FUNDING FOR HONDURAS			\$2,110,000
TOTAL USAID/BHA ER4 FUNDING FOR EL SALVADOR, GUATEMALA, AND HONDURAS REGIONAL RESPONSE IN FY 2021			\$4,917,550
TOTAL USAID/BHA HUMANITARIAN ASSISTANCE FUNDING FOR EL SALVADOR, GUATEMALA, AND HONDURAS REGIONAL RESPONSE IN FY 2021			\$125,387,171
TOTAL STATE/PRM HUMANITARIAN ASSISTANCE FUNDING FOR EL SALVADOR, GUATEMALA, AND HONDURAS REGIONAL RESPONSE IN FY 2021			\$146,862,553
TOTAL USG HUMANITARIAN ASSISTANCE FUNDING FOR EL SALVADOR, GUATEMALA, AND HONDURAS REGIONAL RESPONSE IN FY 2021³			\$272,249,724

² Activities include support of early recovery, risk reduction, and resilience (ER4) programs to address chronic vulnerabilities, reduce the overall impact of recurrent shocks and stresses, and build resilience to future shocks.

³ Reflects portion of funding announced, committed, or obligated as of September 30, 2021.

PUBLIC DONATION INFORMATION

- The most effective way people can assist relief efforts is by making cash contributions to humanitarian organizations that are conducting relief operations. A list of humanitarian organizations that are accepting cash donations for disaster responses around the world can be found at [interaction.org](https://www.interaction.org).
- USAID encourages cash donations because they allow aid professionals to procure the exact items needed (often in the affected region); reduce the burden on scarce resources (such as transportation routes, staff time, and warehouse space); can be transferred very quickly and without transportation costs; support the economy of the disaster-stricken region; and ensure culturally, dietarily, and environmentally appropriate assistance.
- More information can be found at:
 - USAID Center for International Disaster Information: [cidi.org](https://www.cidi.org)
 - Information on relief activities of the humanitarian community can be found at [reliefweb.int](https://www.reliefweb.int).

USAID/BHA bulletins appear on the USAID website at [usaid.gov/humanitarian-assistance/where-we-work](https://www.usaid.gov/humanitarian-assistance/where-we-work)