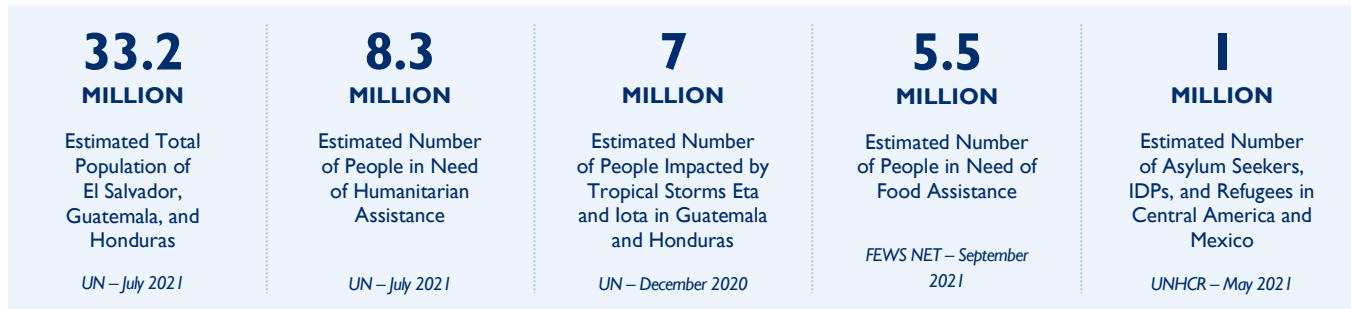




El Salvador, Guatemala, and Honduras – Regional Response

SEPTEMBER 30, 2021

SITUATION AT A GLANCE



- COVID-19 incidence decreases as vaccine administration continues across El Salvador, Guatemala, and Honduras in September.
- State/PRM partner UNHCR provides humanitarian assistance to more than 31,000 people along migration routes in Guatemala from January to August.
- USAID/BHA partner WFP distributes emergency food assistance to tens of thousands of people in El Salvador and Guatemala in August.



TOTAL U.S. GOVERNMENT HUMANITARIAN FUNDING For the El Salvador, Guatemala, and Honduras Regional Response in FY 2021	USAID/BHA ¹	\$125,387,171
	State/PRM ²	\$146,862,553
	Total³	\$272,249,724

For complete funding breakdown with partners, see detailed chart on page 5

¹ USAID's Bureau for Humanitarian Assistance (USAID/BHA)

² U.S. Department of State's Bureau of Population, Refugees, and Migration (State/PRM)

³ Figures include U.S. Government (USG) funding for the El Salvador, Guatemala, and Honduras regional response announced by Vice President Kamala D. Harris on April 26, 2021 and additional State/PRM funding announced by Senior Advisor to the President on Migration Amy Pope on June 10, 2021.

KEY DEVELOPMENTS

COVID-19 Incidence Decreases in El Salvador, Guatemala, and Honduras as COVID-19 Vaccine Administration Continues in September

Following a surge in confirmed coronavirus disease (COVID-19) cases in El Salvador, Guatemala, and Honduras in August, the number of weekly reported cases of the disease decreased across the three countries in September, as health actors continued to administer COVID-19 vaccine doses, according to the UN World Health Organization (WHO). In Honduras, health actors confirmed nearly 5,400 COVID-19 cases during the week of September 20, representing a nearly 50 percent decrease compared with the week of August 16. As of late September, more than 3.3 million people—approximately 35 percent of Honduras' population—had received at least one dose of the COVID-19 vaccine since administration began in the country in late February. Meanwhile, in Guatemala, health actors confirmed more than 16,000 cases of the disease during the week of September 20, representing a more than 24 percent decrease compared with the week of August 16. As of late September, health actors in the country had administered at least one vaccine dose to nearly 4.5 million people, more than 24 percent of Guatemala's population. In addition, in El Salvador, health actors recorded only a 9 percent decrease in weekly confirmed COVID-19 cases from approximately 2,600 to 2,300 cases during the weeks of August 16 and September 20, respectively. WHO reports that more than 4.1 million people—or more than 61 percent of El Salvador's population—had received at least one dose of the COVID-19 vaccine as of late September. In response to ongoing COVID-19-related needs in the region, USAID/BHA continues to support partners providing life-saving health and water, sanitation, and hygiene (WASH) interventions, including distribution of hygiene kits and personal protective equipment, strengthening community surveillance, and training health care workers on infection prevention and control measures.

State/PRM Partner UNHCR Provides Critical Protection Assistance in August

State/PRM partner the Office of the UN High Commissioner for Refugees (UNHCR) continues to provide critical support to meet humanitarian and protection needs for refugees, asylum seekers, and other vulnerable persons in transit in Central America and Mexico. In Guatemala, more than 31,000 individuals benefited from UNHCR-supported interventions, such as legal counseling, psychosocial support, and shelter, from January to August. This figure includes nearly 3,300 people reached with protection services through UNHCR's ProcuMóvil initiative—a joint program with the Government of Guatemala—to provide individuals along migration routes information regarding their rights, identify individuals at risk of refoulement, and provide support in accessing Guatemala's asylum system. During the same period, UNHCR supported approximately 2,000 individual asylum seekers, refugees, and Guatemalans in need of protection through cash-based interventions to meet immediate humanitarian needs and contribute to local economies. Additionally, as of September, UNHCR reports that it has supported Mexico's Commission for Refugee Assistance (COMAR) to increase its asylum registration and processing capacity by approximately 500 percent since 2018. In August, COMAR processed a monthly record high of 6,000 individual asylum claims, helping to improve access to international protection for those in need.

USAID/BHA Partner WFP Provides Emergency Food Assistance in August.

USAID/BHA partner the UN World Food Program (WFP) continued to provide emergency food assistance to tens of thousands of people experiencing acute food insecurity across El Salvador and Guatemala in August. In Guatemala, the UN agency distributed cash to more than 73,000 vulnerable individuals to augment access to food during the month. From January to August, WFP provided emergency assistance to more than 247,000 people in the country, including nearly \$2.6 million in cash transfers directly to beneficiaries. Meanwhile, in El Salvador, WFP provided emergency assistance to nearly 38,000 people in August, distributing cash to nearly 34,000 crisis-affected people to help meet basic needs. From January to August, the UN agency reached approximately 145,000 people in the country with humanitarian assistance.

KEY FIGURES



100,235

People received USG emergency food assistance in September



8,700

People supported with USG-funded protection activities per month

U.S. GOVERNMENT RESPONSE

FOOD SECURITY

To address acute food insecurity in El Salvador, Guatemala, and Honduras that has been exacerbated by the impacts of the COVID-19 pandemic, recurrent droughts, and damage from multiple tropical storms, USAID/BHA supports the delivery of cash assistance for food and food vouchers, as well as in-kind food, to reduce food consumption gaps and prevent and address malnutrition among food-insecure households during the lean season. USAID/BHA is building upon years of strategic emergency food assistance to address increased needs within the three countries in a manner that improves food consumption patterns and increases dietary diversity, while building resilience to shocks for vulnerable communities that rely heavily on agricultural production.

PROTECTION

With State/PRM support, UNHCR is working with the governments of El Salvador, Guatemala, and Honduras to implement the governments' respective commitments under the Comprehensive Regional Protection and Solutions Framework—known in Spanish as MIRPS—to address forced displacement. State/PRM efforts include building government capacities to conduct protection screenings, receive and process asylum claims, and respond to protection concerns among internally displaced persons (IDPs) and other at-risk communities. In addition, State/PRM provides funding to the International Committee of the Red Cross (ICRC), the International Organization for Migration (IOM), UNHCR, and the UN Children's Fund (UNICEF) in the three countries to support shelter, livelihoods, and other assistance to refugees, asylum seekers, IDPs, and vulnerable migrants, including children; survivors of gender-based violence (GBV); lesbian, gay, bisexual, transgender, queer, and intersex individuals; and people with disabilities. UNHCR also leads the Protection Clusters—the coordinating bodies for humanitarian protection activities, comprising UN agencies, non-governmental organizations, and other stakeholders—in countries throughout the region, providing humanitarian leadership to partner organizations on coordinated responses to forced displacement within each country.

With State/PRM funding, UNHCR is working with the Government of El Salvador to train staff to identify persons in need and make referrals for services provided by the Protection Cluster. State/PRM also supports UNICEF efforts throughout the region to strengthen child welfare services for displaced and unaccompanied migrant children, while State/PRM partner ICRC is responding to protection needs in El Salvador, Guatemala, Honduras, and the region, including restoration of family links—such as support related to missing persons—and support to individuals in situations of detention.

USAID/BHA's protection partners in El Salvador, Guatemala, and Honduras provide psychosocial support, learning and recreational opportunities, and case management and referral services for children and women at high risk of exploitation, GBV, and other forms of abuse. At present, USAID/BHA partners are assisting populations in Honduras who have become increasingly vulnerable to GBV and child protection concerns due to displacement and other impacts, such as those generated by the COVID-19 pandemic and tropical storms Eta and Iota. Moreover, USAID/BHA partners are scaling up programming to address additional protection needs in El Salvador, Guatemala, and Honduras.



20,474

People directly benefitted from improved agricultural production through USG assistance in September

AGRICULTURE

USAID/BHA partners are supporting smallholder farmers and other agriculture-dependent households in El Salvador, Guatemala, and Honduras. With USAID/BHA support, humanitarian partners are providing critical agricultural assistance to farmers to ensure appropriate and timely inputs for planting and growing seasons to mitigate worsening food insecurity in the region. Partners are working with rural households through the provision of farming tools, fertilizer, livestock feed, poultry, seeds, and access to veterinary services.

USAID/BHA partners complement these agricultural inputs by providing training on climate-smart farming practices such as drip irrigation, diversification of crops, and soil management to increase crop production and build resilience to future climate shocks. In Honduras, households also receive training on how to increase chicken egg production as a source of protein and additional income. USAID/BHA-funded agricultural programming strengthens livelihood opportunities and market access for rural households and helps to improve nutritional outcomes through increased availability of nutritious local foods.



173

Communities in Honduras' Dry Corridor supported with USG-funded ERMS activities

ECONOMIC RECOVERY AND MARKET SYSTEMS

USAID/BHA partners are implementing economic recovery and market systems (ERMS) interventions to restore livelihoods, increase financial resilience, and mitigate the impact of future shocks on vulnerable households. Program activities include establishing community savings and loans groups and restarting and expanding income-generating activities. In some communities, USAID/BHA partners are also holding financial literacy courses to promote savings and increase awareness of and access to financial services.



\$3.2 Million

In dedicated USG support for shelter and settlement activities in FY 2021

SHELTER AND SETTLEMENTS

USAID/BHA supports implementing partners to help storm-affected households repair and rehabilitate damaged structures. Activities include distributing shelter materials to vulnerable individuals to support repairs, as well as offering temporary relocations to safe shelters, as needed. Moreover, USAID/BHA partners are providing technical assistance and materials to improve emergency shelters and build transitional shelters,

while improving urban settlements to mitigate communities' vulnerability to floods, landslides, and seismic activity.

CONTEXT IN BRIEF

- Consecutive years of drought, damage caused by tropical storms Eta and Iota, and the impact of COVID-19 have adversely affected thousands of subsistence farmers and exacerbated food insecurity in rural and urban communities in El Salvador, Guatemala, and Honduras. Since the onset of the COVID-19 pandemic, poor health infrastructure, high population density, and insufficient availability of water and sanitation services have challenged efforts to control the spread of the disease, while the socioeconomic effects of the pandemic have exacerbated health, food, nutrition, and protection needs, increasing the total population requiring humanitarian assistance across El Salvador, Guatemala, and Honduras.
- USAID/BHA was required to freeze its humanitarian assistance programming in El Salvador, Guatemala, and Honduras between March 2019 and May 2020, during which time food insecurity increased dramatically across the three countries. In June 2020, USAID/BHA began to re-engage with its partners in the region and resumed support for food assistance programming to vulnerable populations in El Salvador, Guatemala, and Honduras.
- Tropical Storm Amanda in El Salvador in May 2020 and tropical storms Eta and Iota in Guatemala and Honduras in November 2020 resulted in widespread destruction and large numbers of people in need, further exacerbating vulnerabilities within the region. USAID/BHA's disaster response experts in San José, Costa Rica, and Washington, D.C., are monitoring the 2021 Atlantic hurricane season in coordination with local partners and U.S. mission disaster relief officers in the region.
- On February 26, 2021, U.S. Ambassador William W. Popp issued a disaster declaration for Guatemala; on March 8, U.S. Chargé d'Affaires Colleen A. Hoey issued a disaster declaration for Honduras; and on March 15, U.S. Chargé d'Affaires Brendan O'Brien issued a disaster declaration in El Salvador. All three disaster declarations were issued for FY 2021 in response to severe food insecurity resulting from increased displacement due to violence, the compounding effects of natural disasters, the COVID-19 pandemic, and recurrent drought.

USG HUMANITARIAN FUNDING FOR THE EL SALVADOR, GUATEMALA, AND HONDURAS REGIONAL RESPONSE IN FY 2021

IMPLEMENTING PARTNER	ACTIVITY	LOCATION	AMOUNT
EL SALVADOR			
USAID/BHA			
Americares	Health, Protection, WASH	San Miguel, Usulután	\$1,000,000
Catholic Relief Services (CRS)	Agriculture, Multipurpose Cash Assistance (MPCA)	Ahuachapán, La Unión, Morazán, Sonsonate	\$2,409,500
International Rescue Committee (IRC)	MPCA, Protection	San Miguel, San Salvador, Santa Ana, Usulután	\$592,031
Norwegian Refugee Council (NRC)	ERMS, MPCA, Protection	La Libertad, La Paz, San Salvador, Santa Ana, Sonsonate, Usulután	\$2,307,607

Pan American Health Organization (PAHO)	Health	Ahuachapán, La Paz, La Unión, Morazán, San Miguel, Usulután	\$800,000
WFP	Agriculture, Disaster Risk Reduction Policy and Practice (DRRPP), Food Assistance—Cash Transfers	Ahuachapán, La Unión, Morazán, San Miguel, Usulután	\$7,000,000
World Vision	Agriculture, ERMS, MPCA, WASH	Ahuachapán, Morazán, San Miguel, San Salvador, Santa Ana, Sonsonate, Usulután,	\$2,000,000
TOTAL USAID/BHA FUNDING IN EL SALVADOR			\$16,109,138
STATE/PRM			
UNHCR	Education, ERMS, Protection, Shelter and Settlements	Countrywide	\$7,700,000
UNICEF	Education, Protection, WASH	Countrywide	\$3,570,000
TOTAL STATE/PRM FUNDING IN EL SALVADOR			\$11,270,000
GUATEMALA			
USAID/BHA			
Acción contra el Hambre/Spain (ACH/Spain)	Food Assistance—Cash Transfers	Huehuetenango	\$3,000,000
CARE	ERMS, Protection	Alta Verapaz, Izabal, Quetzaltenango, Quiché, San Marcos	\$4,498,659
CRS	Agriculture, ERMS, MPCA, Nutrition, WASH	Alta Verapaz, Chiquimula	\$13,500,000
Global Communities	Agriculture, ERMS, Health, MPCA, WASH	Huehuetenango	\$11,400,000
International Federation of Red Cross and Red Crescent Societies (IFRC)	ERMS, MPCA, Nutrition	Izabal	\$1,075,650
IRC	MPCA, Protection	Chimaltenango, Huehuetenango	\$499,989
Plan USA	Agriculture, ERMS, Food Assistance—Cash Transfers, WASH	Alta Verapaz	\$2,500,000
Save the Children Federation (SCF)	Health, MPCA, Nutrition, Protection, WASH	Quiché	\$6,578,865
WFP	Food Assistance—Cash Transfers	El Progreso, Jalapa, Jutiapa, Retalhuleu, Santa Rosa, Sololá, Zacapa	\$5,500,000
World Vision	Agriculture, Food Assistance—Cash Transfers, Protection, WASH	Alta Verapaz, Totonicapán	\$3,000,000
TOTAL USAID/BHA FUNDING IN GUATEMALA			\$51,553,163
STATE/PRM			
IOM	Multi-Sector Assistance	Countrywide	\$2,448,455
SCF	Protection	Countrywide	\$1,600,000
UNHCR	Education, ERMS, Protection, Shelter and Settlements	Countrywide	\$14,300,000
UNICEF	Education, Protection, WASH, Shelter and Settlements	Countrywide	\$4,395,000
TOTAL STATE/PRM FUNDING IN GUATEMALA			\$22,743,455
HONDURAS			
USAID/BHA			

Adventist Development and Relief Agency (ADRA)	Agriculture, Food Assistance–Local, Regional, and International Procurement	Choluteca, El Paraíso, Francisco Morazán	\$9,000,000
CARE	MPCA, Protection	Cortés, Santa Bárbara, Yoro	\$1,736,000
CRS	Agriculture, ERMS, MPCA, Shelter and Settlements, WASH	Cortés, Francisco Morazán, La Paz, Lempira, Santa Bárbara, Yoro	\$7,085,670
Global Communities	Agriculture; ERMS; Humanitarian Coordination, Information Management, and Assessments (HCIMA); MPCA; Shelter and Settlements; WASH	Choluteca, Copán, Cortés, El Paraíso, Ocotepeque, Santa Bárbara, Valle	\$4,500,000
GOAL	Agriculture, ERMS, MPCA, Shelter and Settlements, WASH	Atlántida, Colón, Cortés, Francisco Morazán, Gracias a Dios, Intibucá, Lempira, Olancho, Yoro	\$6,585,670
IRC	MPCA, Protection	Cortés, Francisco Morazán, Santa Bárbara	\$399,980
NRC	Agriculture, ERMS, MPCA, Protection	Copán, Francisco Morazán, Santa Bárbara	\$2,000,000
PAHO	Health	Choluteca, Gracias a Dios, Santa Bárbara	\$1,500,000
UNICEF	Health, Nutrition, Protection	Atlántida, Cortés, Yoro	\$2,000,000
WFP	Agriculture, DRRPP, ERMS, Food Assistance–Cash Transfers	Atlántida, Colón, Cortés, Olancho, Santa Bárbara, Yoro	\$15,500,000
World Vision	Agriculture, ERMS, MPCA, Protection, WASH	Copán, Cortés, Santa Bárbara, Yoro	\$2,500,000
TOTAL USAID/BHA FUNDING IN HONDURAS			\$52,807,320
STATE/PRM			
UNHCR	Education, ERMS, Protection, Shelter and Settlements	Countrywide	\$9,700,000
UNICEF	Education, Nutrition, Protection, WASH	Countrywide	\$3,636,000
TOTAL STATE/PRM FUNDING IN HONDURAS			\$13,336,000
BELIZE			
STATE/PRM			
UNICEF	Education, Protection	Countrywide	\$687,000
TOTAL STATE/PRM FUNDING IN BELIZE			\$687,000
COSTA RICA			
STATE/PRM			
HIAS	ERMS	Countrywide	\$1,500,000
IOM	Multi-Sector Assistance	Countrywide	\$90,000
Pan American Development Foundation (PADF)	Protection	Countrywide	\$2,217,000
UNHCR	ERMS, MPCA, Protection	Countrywide	\$8,900,000
UNICEF	Education, Protection, WASH	Countrywide	\$1,120,000
TOTAL STATE/PRM FUNDING IN COSTA RICA			\$13,827,000
MEXICO			
STATE/PRM			

American Red Cross (AmCross)	Protection	Countrywide	\$1,655,854
Asylum Access	Protection	Countrywide	\$1,491,282
Child Fund International	Protection	Countrywide	\$1,194,462
HIAS	Protection	Countrywide	\$1,491,500
IOM	MPCA, Protection, Shelter and Settlements	Countrywide	\$5,180,000
UNHCR	Education, MPCA, Protection, Shelter and Settlements	Countrywide	\$38,400,000
UNICEF	Education, ERMS, Protection, WASH, Shelter and Settlements	Countrywide	\$10,250,000
TOTAL STATE/PRM FUNDING IN MEXICO			\$59,663,098
PANAMA			
STATE/PRM			
IOM	Multi-Sector Assistance	Countrywide	\$390,000
PADF	Protection	Countrywide	\$1,000,000
UNICEF	Education, Health, Protection, WASH	Countrywide	\$1,446,000
TOTAL STATE/PRM FUNDING IN PANAMA			\$2,836,000
REGIONAL			
STATE/PRM			
ICRC	Education, Health, Protection	Regional	\$10,200,000
IOM	Protection, Shelter and Settlements	Regional	\$1,660,000
UNHCR	ERMS, Protection, Shelter and Settlements	Regional	\$10,100,000
UNICEF	HCIMA, DRRPP	Regional	\$540,000
TOTAL STATE/PRM FUNDING IN REGION			\$22,500,000
TOTAL USAID/BHA EMERGENCY FUNDING FOR EL SALVADOR, GUATEMALA, AND HONDURAS REGIONAL RESPONSE IN FY 2021			\$120,469,621
TOTAL STATE/PRM EMERGENCY FUNDING FOR EL SALVADOR, GUATEMALA, AND HONDURAS REGIONAL RESPONSE IN FY 2021			\$146,862,553
TOTAL USG EMERGENCY FUNDING FOR EL SALVADOR, GUATEMALA, AND HONDURAS REGIONAL RESPONSE IN FY 2021			\$267,332,174

¹ State/PRM funding figures reflect a portion—totaling \$69,344,000—of the more than \$104 million announced by Vice President Harris on April 26, 2021; figures do not include announced \$25 million from prior fiscal years reallocated to address new priorities and approximately \$10.5 million in funding under the U.S. Refugee Admissions Program in the Western Hemisphere that is not included as part of State/PRM's overseas assistance totals. Additionally, State/PRM funding includes \$57,100,000 announced by Senior Advisor to the President on Migration Amy Pope on June 10, 2021. Included in the overall total is \$10.8 million in funding from the American Rescue Plan Act in response to COVID-19.

ER4 FUNDING FOR EL SALVADOR, GUATEMALA, AND HONDURAS REGIONAL RESPONSE IN FY 2021

IMPLEMENTING PARTNER	ACTIVITY	LOCATION	AMOUNT
USAID/BHA			
El Salvador			
CRS	DRRPP	La Unión, San Miguel, San Vicente, Usulután	\$380,000
Miyamoto International	DRRPP	San Salvador	\$150,000
TOTAL USAID/BHA FUNDING FOR EL SALVADOR			\$530,000
Guatemala			

CRS	Agriculture, ERMS, Natural Hazards and Technological Risks (NHTR)	Baja Verapaz, Chiquimula	\$905,802
	DRRPP, Shelter and Settlements	Guatemala Department	\$1,000,000
Global Communities	DRRRPP	Guatemala Department, Huehuetenango, Jalapa, Jutiapa, Quetzaltenango, Quiché, San Marcos, Santa Rosa, Sololá, Totonicapán	\$371,748

TOTAL USAID/BHA FUNDING FOR GUATEMALA			\$2,277,550
--	--	--	--------------------

Honduras			
CRS	Agriculture, ERMS, NHTR	Intibucá, La Paz, Lempira	\$1,000,000
	DRRPP, Shelter and Settlements	Francisco Morazan	\$650,000
GOAL	DRRPP, ERMS, Natural Hazards and Technological Risks, Shelter and Settlements	Cortes, Yoro	\$460,000

TOTAL USAID/BHA FUNDING FOR HONDURAS			\$2,110,000
---	--	--	--------------------

TOTAL USAID/BHA ER4 FUNDING FOR EL SALVADOR, GUATEMALA, AND HONDURAS REGIONAL RESPONSE IN FY 2021			\$4,917,550
--	--	--	--------------------

² Activities include support of early recovery, risk reduction, and resilience (ER4) programs to address chronic vulnerabilities, reduce the overall impact of recurrent shocks and stresses, and build resilience to future shocks.

TOTAL USAID/BHA HUMANITARIAN ASSISTANCE FUNDING FOR EL SALVADOR, GUATEMALA, AND HONDURAS REGIONAL RESPONSE IN FY 2021			\$125,387,171
--	--	--	----------------------

TOTAL STATE/PRM HUMANITARIAN ASSISTANCE FUNDING FOR EL SALVADOR, GUATEMALA, AND HONDURAS REGIONAL RESPONSE IN FY 2021			\$146,862,553
--	--	--	----------------------

TOTAL USG HUMANITARIAN ASSISTANCE FUNDING FOR EL SALVADOR, GUATEMALA, AND HONDURAS REGIONAL RESPONSE IN FY 2021			\$272,249,724
--	--	--	----------------------

³ Reflects portion of funding announced, committed, or obligated as of September 30, 2021.

PUBLIC DONATION INFORMATION

- The most effective way people can assist relief efforts is by making cash contributions to humanitarian organizations that are conducting relief operations. A list of humanitarian organizations that are accepting cash donations for disaster responses around the world can be found at [interaction.org](https://www.interaction.org).
- USAID encourages cash donations because they allow aid professionals to procure the exact items needed (often in the affected region); reduce the burden on scarce resources (such as transportation routes, staff time, and warehouse space); can be transferred very quickly and without transportation costs; support the economy of the disaster-stricken region; and ensure culturally, dietarily, and environmentally appropriate assistance.
- More information can be found at:
 - USAID Center for International Disaster Information: [cidi.org](https://www.cidi.org)
 - Information on relief activities of the humanitarian community can be found at [reliefweb.int](https://www.reliefweb.int).

USAID/BHA bulletins appear on the USAID website at [usaid.gov/humanitarian-assistance/where-we-work](https://www.usaid.gov/humanitarian-assistance/where-we-work)