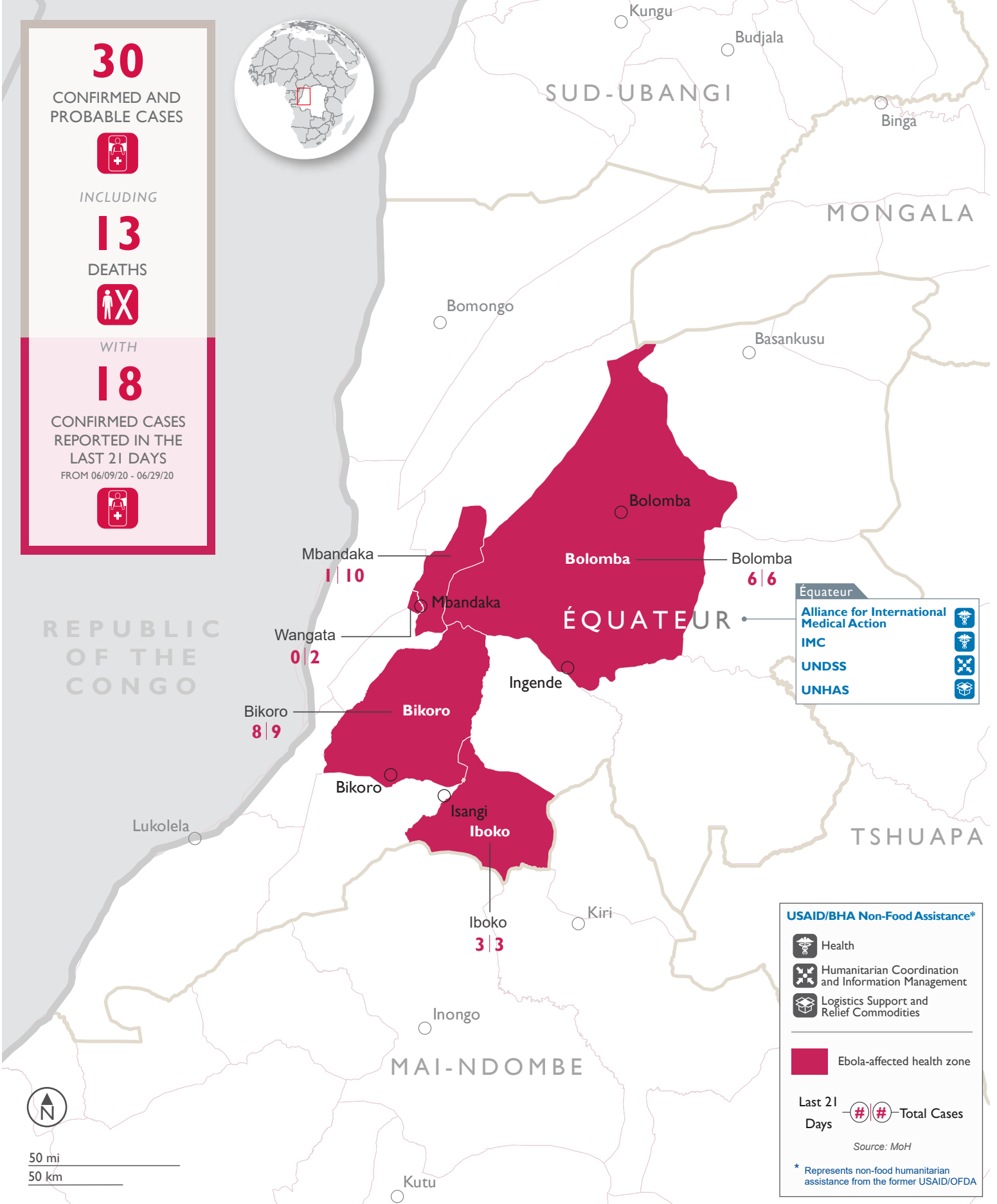


Epidemiological data as of 06/28/20



30
CONFIRMED AND PROBABLE CASES

INCLUDING

13
DEATHS

WITH

18
CONFIRMED CASES REPORTED IN THE LAST 21 DAYS
FROM 06/09/20 - 06/29/20

Équateur

- Alliance for International Medical Action
- IMC
- UNDSS
- UNHAS

USAID/BHA Non-Food Assistance*

- Health
- Humanitarian Coordination and Information Management
- Logistics Support and Relief Commodities

■ Ebola-affected health zone

Last 21 Days — (#) (#) — Total Cases

Source: MoH

* Represents non-food humanitarian assistance from the former USAID/OFDA

The boundaries and names used on this map do not imply official endorsement or acceptance by the U.S. Government.

Map created 06/29/20