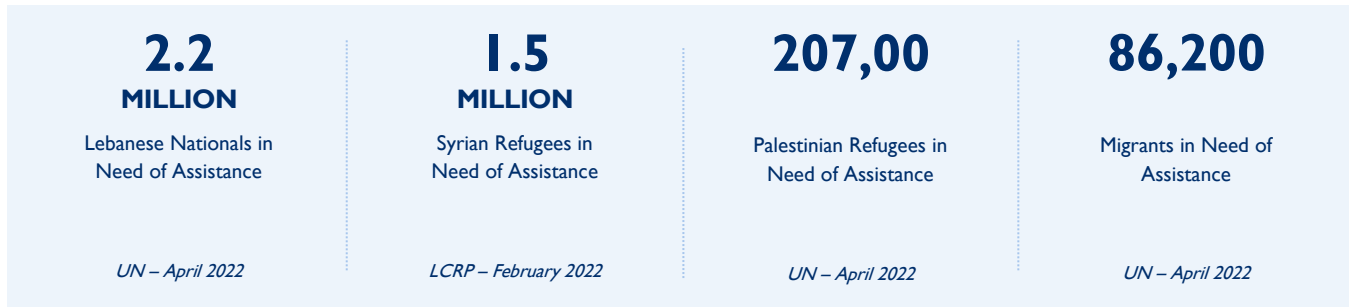


Lebanon – Complex Emergency

JUNE 1, 2022

SITUATION AT A GLANCE



- The USG announced more than \$111 million in State/PRM assistance for 1.5 million Syrian refugees and host community members in Lebanon on May 10.
- The market effects of the Russian Federation’s invasion of Ukraine and Lebanon’s ongoing severe economic crisis are exacerbating humanitarian needs across the country.
- USAID announced nearly \$64 million in additional emergency food assistance for Lebanon in March.
- Approximately 2.5 million Lebanese nationals, migrants, and Palestinian refugees in Lebanon are in need of humanitarian assistance as of April, an increase of 16 percent compared to the 1.9 million identified as of August 2021, the UN reports.



TOTAL U.S. GOVERNMENT HUMANITARIAN FUNDING For the Lebanon Response in FY 2022	USAID/BHA ¹	\$109,376,760
	State/PRM ²	\$116,100,000
	Total	\$225,476,760

For complete funding breakdown with partners, see detailed chart on page 5

¹ USAID’s Bureau for Humanitarian Assistance (USAID/BHA)

² U.S. Department of State’s Bureau of Population, Refugees, and Migration (State/PRM)

KEY DEVELOPMENTS

U.S. Announces Additional Humanitarian Assistance for the Syria Crisis Response in Lebanon

The U.S. Government (USG) announced nearly \$808 million in additional humanitarian assistance for the Syria regional crisis response on May 10, including more than \$111 million in State/PRM humanitarian assistance for 1.5 million Syrian refugees and host community members in Lebanon. The new assistance includes support for non-governmental organizations (NGOs) and public international organizations in Lebanon providing education, health, livelihoods, mental health and psychosocial services, multi-purpose cash assistance (MPCA), protection, shelter and settlements, and water, sanitation, and hygiene (WASH) support to the most vulnerable.

Conflict in Ukraine, Currency Depreciation Drive Price Increases; USAID Announces \$64 Million in Emergency Food Assistance

The effects of the Government of the Russian Federation's (GoRF) war in Ukraine, the continued depreciation of the Lebanese pound (LBP), and inflation have generated significant food and fuel price volatility in Lebanon, adversely affecting vulnerable populations, according to USAID/BHA NGO partner Mercy Corps. On May 26, the market value of the LBP surpassed 34,000 per 1 U.S. dollar (USD), despite still being officially fixed at 1,500 LBP to 1 USD. The recent decline of the LBP's market value represents the sharpest depreciation of the currency's value since early January 2022 and has negatively affected household purchasing power. Meanwhile, the GoRF invasion of Ukraine and related supply chain disruptions and elevated global food prices have driven additional inflation in Lebanon, which is reliant on fuel and food commodity imports. As a result, the prices of diesel and octane fuel increased by approximately 60 percent and 30 percent, respectively, from early March to late April, and by more than 900 percent from April 2021 to April 2022. Food prices have also increased across Lebanon, where the price of the minimum food basket rose from 619,000 LBP in March to 700,000 LBP in April. The April figure exceeds the official monthly minimum wage of 675,000 LBP, underscoring the hardships impeding many low-income households from meeting their basic needs. Food price increases are anticipated to continue due to the ongoing conflict in Ukraine and persistent LBP depreciation, Mercy Corps reports.

Relief actors warn that rising commodity prices are exacerbating existing humanitarian needs and threatening vulnerable population's access to food, as well as essential health, nutrition, and WASH services. In response, USAID/BHA supports the UN World Food Program (WFP) to meet the food needs of vulnerable populations in Lebanon. In March, USAID announced an additional \$64 million for WFP to provide emergency food assistance—including in-kind food assistance and vouchers—to more than 740,000 people.

With support from USAID/BHA and other donors, WFP assisted nearly 1.7 million individuals in April, providing unconditional cash assistance to more than 1 million refugees, in-kind food assistance to more than 300,000 individuals, and social protection services to approximately 250,000 people. WFP also increased the value of monthly cash assistance for refugees from 300,000 LBP per capita for food assistance to 500,000 LBP per capita in April to help beneficiaries meet their basic needs amid rising inflation.

Increasing Number of People in Need of Humanitarian Assistance in Lebanon

Nearly 2.5 million people residing in Lebanon—in addition to Syrian refugees—are in need of

humanitarian assistance, according to a UN report released in April 2022. The April figure represents an approximately 16 percent increase in the number of people in need compared to the 1.9 million people identified in the 2021–2022 UN Emergency Response Plan released in August 2021. The revised estimated population in need figure includes 2.2 million vulnerable Lebanese, 208,000 Palestinian refugees, and 86,200 migrants in the country, and is distinct from the approximately 1.5 million vulnerable displaced Syrians in Lebanon who remain among the most vulnerable under the 2022 Lebanon Crisis Response Plan. The increase in humanitarian needs is primarily driven by Lebanon’s economic crisis, which has limited individuals’ access to food and other basic services, such as health care, driving households to resort to negative coping strategies, including incurring high levels of debt, the UN reports. The UN warns that should root causes of the economic crisis remain unresolved, further deterioration of the economic situation is likely to drive more people in Lebanon into poverty and acute food insecurity. Notably, Lebanon held a general election on May 15, the first election since the country experienced several large socioeconomic shocks due to overlapping crises starting in 2019.

Boat Carrying Migrants from Lebanon, Palestine, and Syria Capsizes, Resulting in Deaths

On April 24, a boat with 84 migrants from Lebanon, Palestine, and Syria capsized off the coast of Lebanon’s Tripoli city, resulting in the deaths of at least six individuals, including an infant; 23 individuals remained unaccounted for as of late April, the UN reports. Nearly 40 boats transporting more than 1,500 individuals have departed Lebanon since 2020, with many migrants attempting to gain asylum in Europe, including an increasing number of vulnerable Lebanese. Relief actors attribute many of the recent departures to the macroeconomic crisis in Lebanon. Both the International Organization for Migration and the Office of the UN High Commissioner for Refugees (UNHCR) continue to warn refugee and migrant communities of the dangers of irregular onward movements.

KEY FIGURES



\$103.8 million

In dedicated USAID/BHA emergency food assistance in FY 2022



205,000

Caregivers reached with USG-supported nutrition information from January to March

U.S. GOVERNMENT RESPONSE

FOOD SECURITY

Since FY 2012, USAID/BHA has provided emergency food assistance to respond to the needs of Syrian refugees in Lebanon. In FY 2021, USAID/BHA began to provide funding to support emergency food assistance activities supporting Lebanese nationals affected by the country’s ongoing economic crisis. In FY 2022, USAID/BHA is supporting partner WFP with nearly \$104 million to provide emergency food assistance for Syrian refugees in Lebanon and other vulnerable populations, including Lebanese nationals.

HEALTH AND NUTRITION

State/PRM supports UNHCR to subsidize primary and secondary health care services—including child, maternal, mental health, and sexual and reproductive health care, as well as medications and vaccinations—for Syrian refugees, refugees of other nationalities, and vulnerable Lebanese nationals. UNHCR also rehabilitated two primary health care centers (PHCCs) in Beqaa and North governorates to enable coronavirus disease (COVID-19) vaccination services. As of January 31, the rehabilitated PHCC in Beqaa had provided nearly 8,700 COVID-19 vaccines to vulnerable

populations. In addition, UNHCR covers the full cost of COVID-19 tests and treatment for refugee patients. Since March 2020, UNHCR has covered the cost of more than 3,860 COVID-19 tests and admissions for more than 1,900 refugees under its referral care program. In addition, from January to March, State/PRM partner the UN Children’s Fund (UNICEF) disseminated essential immunization information to nearly 50,000 community health volunteers in South and An Nabatiyeh governorates and reached nearly 205,000 caregivers across Lebanon with critical nutrition information. Over the same period, UNICEF provided more than 11,300 children ages five years and younger with micronutrient supplements to prevent malnutrition.

USAID/BHA also supports Accion Contra el Hambre (ACH), International Medical Corps (IMC), and Relief International to provide critical health support across Lebanon. With USAID/BHA funding, IMC continues to support PHCCs in Lebanon to deliver community-based, at-home health assistance, conducting more than 3,000 outreach consultations from February to April and distributing more than 116,000 critical PPE and infection prevention and control items as of April 30.



250,000

People reached by USG-supported WASH assistance per month

WASH

The USG supports WASH programming throughout Lebanon to bolster water and sanitation conditions and prevent the spread of COVID-19. USAID/BHA support enables NGO partners ACH, IMC, Relief International, and World Vision to implement critical WASH programming and ensure that vulnerable households have essential WASH supplies, including detergent, face masks, hand sanitizer, and soap. With State/PRM support, UNICEF continues to facilitate access to safe drinking water and sanitation services for more than 250,000 Syrian refugees residing in informal settlements across Lebanon, helping mitigate public health hazards and social tensions related to limited water resources. In response to critical fuel and water shortages across Lebanon, UNICEF also secured access to safe drinking water for more than 2.3 million people through emergency fuel procurement and the deployment of rapid response teams with Central Emergency Response Fund support.



146,000

Households reached with USG-supported cash assistance in January

MPCA AND PROTECTION

The USG supports seven NGOs to provide child protection, gender-based violence (GBV) prevention, and mental health and psychosocial support services to vulnerable populations across Lebanon. In addition, State/PRM supports UNICEF to provide integrated social assistance support to vulnerable individuals including children and GBV survivors; UNICEF reached 130,000 individuals with protection services as of late March. Additionally, in January, State/PRM partner UNHCR distributed MPCA to approximately 144,000 Syrian refugee households and 2,000 refugee households of other nationalities to bolster the beneficiaries’ capacity to meet their basic needs, discourage the use of negative coping strategies, and mitigate exploitation risks.



3.1 Million

Textbooks distributed to public schools by State/PRM partner UNICEF

EDUCATION

State/PRM partner UNICEF supports education activities for vulnerable students across Lebanon. As of late March, UNICEF had distributed approximately 3.1 million textbooks to support children enrolled in public schools across Lebanon. In addition, between January and March, UNICEF distributed an estimated 19,000 solar powered desk lamps to children in formal and non-formal education facilities to support learning during power cuts. Over the same period, UNICEF also referred more than 37,000 children to learning opportunities, reached more than 7,000 children ages 10 to 14 years with adapted basic literacy and numeracy lessons, and provided more than 1,600 children with disabilities with therapy services to support their inclusion in education. In addition, with State/PRM support, UNHCR continues to administer a certified basic literacy and numeracy test for children ages 10–14 years who are out of school, supporting their entry to the formal public education system. UNHCR has also enrolled nearly 200 vulnerable youth from refugee and host communities in vocational training.

CONTEXT IN BRIEF

- Lebanon hosts the largest number of refugees per capita of any country, with the influx of approximately 1.5 million refugees straining local resources and generating significant humanitarian needs. Additionally, Lebanon has experienced several large socioeconomic shocks due to overlapping crises since 2019, including ongoing political instability, the steep deterioration of the economy, and the emergence of COVID-19, which have worsened economic and financial conditions and resulted in ongoing instability across the country.
- On August 4, 2020, concurrent explosions occurred at a warehouse near the Port of Beirut, resulting in at least 180 deaths and injuring an estimated 6,500 people, according to the Government of Lebanon. Relief actors report that the explosions damaged approximately 48,000 buildings, affected 171,600 people, and displaced many vulnerable Lebanese, Palestinian, and Syrian households, whose coping mechanisms had already been strained by the ongoing socioeconomic crisis in Lebanon. In response, USAID deployed a Disaster Assistance Response Team (DART) to Beirut and activated a Washington, D.C.-based Response Management Team (RMT) to coordinate response efforts on August 7, 2020. The DART and RMT were demobilized on August 21, 2020, as response efforts shifted to reconstruction.
- On October 1, 2021, U.S. Ambassador to Lebanon Dorothy C. Shea declared a disaster due to the humanitarian effects of the complex emergency in Lebanon for FY 2022.

USAID HUMANITARIAN FUNDING FOR THE LEBANON RESPONSE IN FY 2022¹

IMPLEMENTING PARTNER	ACTIVITY	LOCATION	AMOUNT
USAID/BHA			
IMC	Health, Protection, WASH	Beirut, Mount Lebanon, North Lebanon, South Lebanon	\$2,100,000
Relief International	Health, Nutrition, Protection, WASH	Beirut, Mount Lebanon, North Lebanon, South Lebanon	\$3,375,000

WFP	Food Assistance—Local, Regional, and International Procurement; Vouchers	Countrywide	\$103,800,000
	Program Support	Countrywide	\$101,760
TOTAL USAID/BHA FUNDING			\$109,376,760
STATE/PRM			
Implementing Partner	Cash-Based Programming, Health, Livelihoods, Protection, Relief Commodities, Shelter and Settlements, WASH	Countrywide	\$7,400,000
UNICEF	Cash-Based Programming, Education, Health, Livelihoods, Mental Health, Protection, Relief Commodities, Shelter and Settlements, WASH, Youth Programs	Countrywide	\$36,200,000
UNHCR	Cash-Based Programming, Health, Nutrition, Child Protection, Education, GBV Prevention, WASH, Youth Programs	Countrywide	\$67,500,000
UN Relief and Works Agency for Palestine Refugees in the Near East	Cash-Based Programming, Child Protection, Education, GBV Prevention, Health, Nutrition, WASH, Youth Programs	Countrywide	\$5,000,000
TOTAL STATE/PRM FUNDING			\$116,100,000
TOTAL USG HUMANITARIAN FUNDING FOR THE LEBANON RESPONSE IN FY 2022			\$225,476,760

¹ Year of funding indicates the date of commitment or obligation, not appropriation, of funds. Funding figures reflect publicly announced funding as of June 1, 2022.

² State/PRM and USAID/BHA funding benefitting refugees in Lebanon is also reported in the USG Syria Complex Emergency Fact Sheet.

PUBLIC DONATION INFORMATION

- The most effective way people can assist relief efforts is by making cash contributions to humanitarian organizations that are conducting relief operations. A list of humanitarian organizations that are accepting cash donations for disaster responses around the world can be found at interaction.org.
- USAID encourages cash donations because they allow aid professionals to procure the exact items needed (often in the affected region); reduce the burden on scarce resources (such as transportation routes, staff time, and warehouse space); can be transferred very quickly and without transportation costs; support the economy of the disaster-stricken region; and ensure culturally, dietarily, and environmentally appropriate assistance.
- More information can be found at:
 - USAID Center for International Disaster Information: cidi.org
 - Information on relief activities of the humanitarian community can be found at reliefweb.int.

USAID/BHA bulletins appear on the USAID website at [usaid.gov/humanitarian-assistance/where-we-work](https://www.usaid.gov/humanitarian-assistance/where-we-work)