

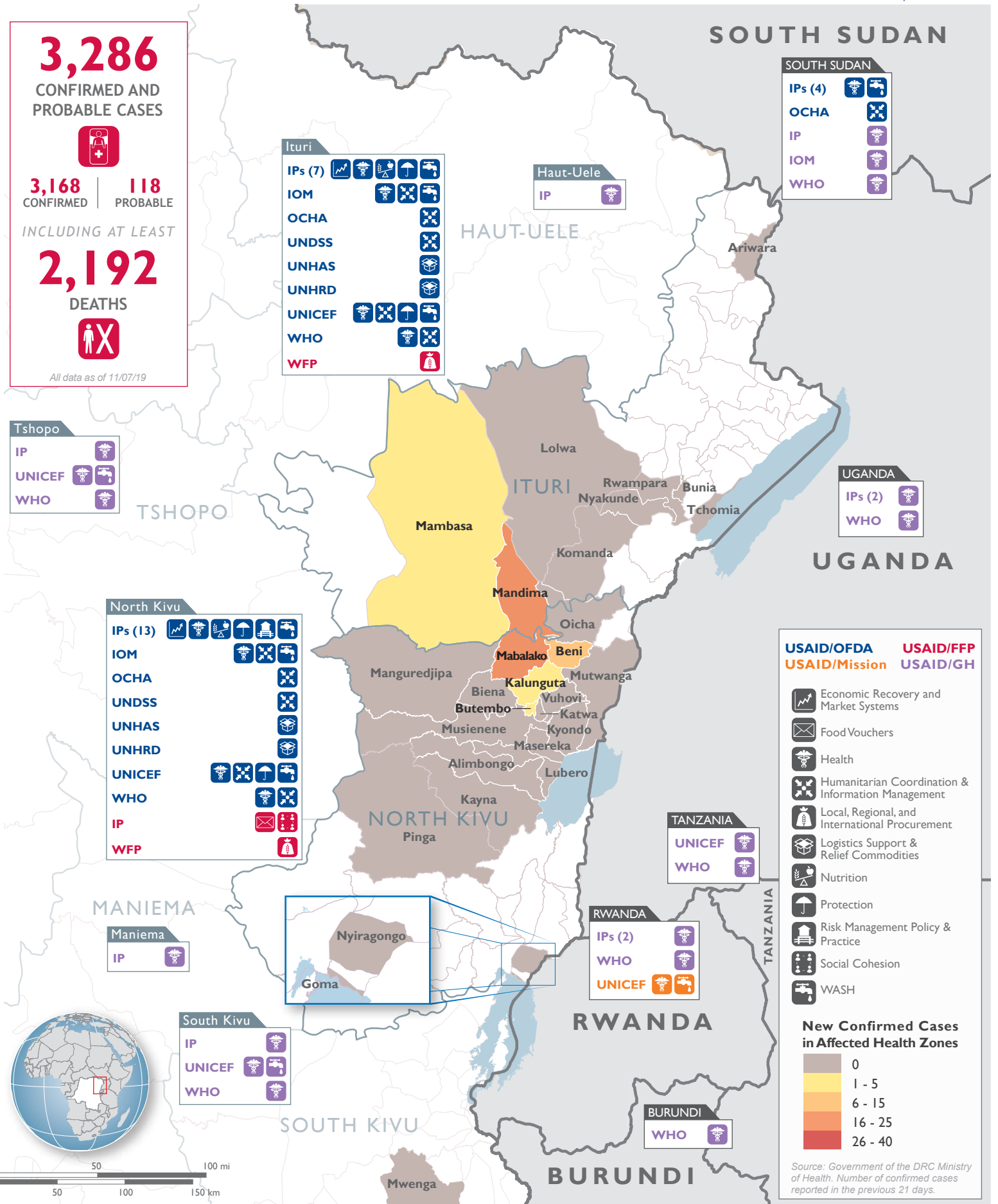
3,286
CONFIRMED AND PROBABLE CASES

3,168 CONFIRMED | **118** PROBABLE

INCLUDING AT LEAST

2,192
DEATHS

All data as of 11/07/19



Ituri

IPs (7)

IOM

OCHA

UNDSS

UNHAS

UNHRD

UNICEF

WHO

WFP

Haut-Uele

IP

SOUTH SUDAN

IPs (4)

OCHA

IP

IOM

WHO

Tshopo

IP

UNICEF

WHO

UGANDA

IPs (2)

WHO

North Kivu

IPs (13)

IOM

OCHA

UNDSS

UNHAS

UNHRD

UNICEF

WHO

IP

WFP

TANZANIA

UNICEF

WHO

Maniema

IP

Nyiragongo

Goma

RWANDA

IPs (2)

WHO

UNICEF

South Kivu

IP

UNICEF

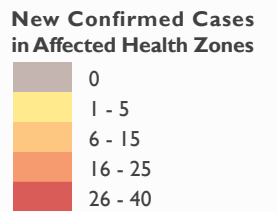
WHO

BURUNDI

WHO

USAID/OFDA **USAID/FFP**
USAID/Mission **USAID/GH**

- Economic Recovery and Market Systems
- Food Vouchers
- Health
- Humanitarian Coordination & Information Management
- Local, Regional, and International Procurement
- Logistics Support & Relief Commodities
- Nutrition
- Protection
- Risk Management Policy & Practice
- Social Cohesion
- WASH



Source: Government of the DRC Ministry of Health. Number of confirmed cases reported in the previous 21 days.